

## PRODUCT BENEFITS

### Benefits of NORMACONNECT® Pipe Couplings

NORMACONNECT® pipe couplings provide the following features:

#### Simple fitting and quick installation

- Ready to use, no single parts, no disassembling and reassembling
- No preparation time, no pipe-end treatment, no harmonization work
- Offers angular deflection, no precise pipe gap necessary, stress-free pipe joining

#### Reliable sealing system

- Dynamic sealing effect even with rough pipe surface
- Dampens pressure surges, vibration and shocks
- Axial-restraint (Grip / CombiGrip E / PlastGrip E)
- Allows length variation (Flex)

#### Durable and economic

- High chemical resistance of stainless steel components and sealing sleeve
- Long-term elasticity of rubber
- Trouble-free and maintenance-free pipe joint
- Couplings are several times re-usable
- No pipe-end treatment, thus cost saving

#### Universal range of applications

- For pressure, depression or vacuum
- Free choice of pipe material
- Joins same or different pipe materials
- Dampens pressure surges or structure borne noise
- Repairs pipe damage

## **Benefits for the user**

NORMACONNECT® pipe couplings and repair clamps provide benefits for the user with regard

### **... to**

- Industry and industrial applications
- Water supply and water treatment
- Domestic application
- Shipbuilding and ship repair
- Service, repair and maintenance

### **... to planning**

- Simple and cost-reliable planning with ready-to-use pipe joints
- Reproducibility of fitting time, installation according to schedule
- Low weight, handy, compact (shipbuilding, vehicle construction)
- Reduced space requirement thus tight pipe guidance possible
- Enlargement or change of pipeline direction is done quickly and at low cost, due to the re-usability of the pipe couplings

### **... to installation**

- Low weight, handy, compact
- Simple and quick installation due to ready-to-use pipe joints
- No preparation time, no pipe-end treatment, no harmonization work
- Tight-safe and long lasting pipe joint
- Installation of pre-fabricated pipe sections

### **... to operation**

- Reliable through controlled manufacturing quality and high safety reserves
- Dampening of pressure surges, vibration and structure borne noise, protection of integrated gauges, fittings etc.
- Enlargement or change of pipe direction is done quick and at low cost, due to the re-usability of the pipe couplings
- Changes are possible during operation due to parallel guidance of pipes or bypasses

### **... to down-time, repair or maintenance**

- Very quick reaction due to dis-chargeability and re-usability of pipe joints
- Very short down-time due to rapid disconnection and refitting of pipe coupling
- No design constraint, joins same or different pipe materials
- Ready-to-use, no preparation time, no pipe-end treatment, no harmonization work
- No risk of fire, e.g. during welding
- Problem solving during reorganization and reconstruction

# NORMACONNECT® REP E

## THE REPAIR COUPLING

NORMACONNECT® REP E are non-restraint repair couplings. They are used to connect and/or seal damaged metal and plastic pipes. They also enable repairs to be carried out easily, quickly and safely without the need to dismantle the pipes.

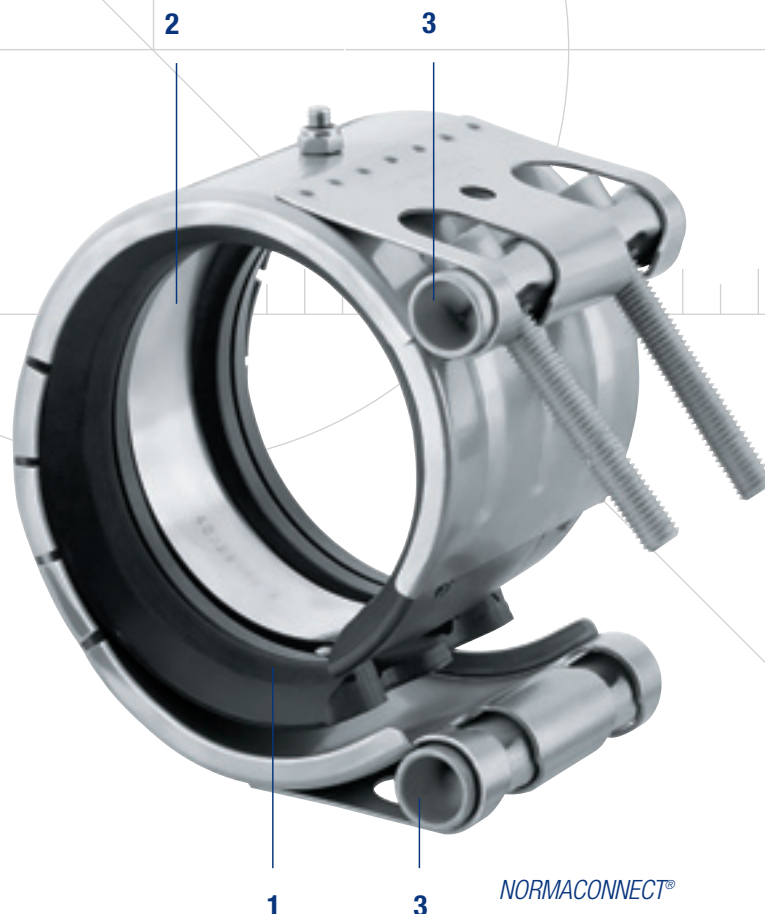
NORMACONNECT® REP E Features:

- 1. Double-lip sealing system\*
- 2. Standard strip insert\*
- 3. Heavy duty lock bars\*

\* For details refer to Product benefits pages 6–7.



NORMACONNECT®  
REP E



NORMACONNECT®  
REP E

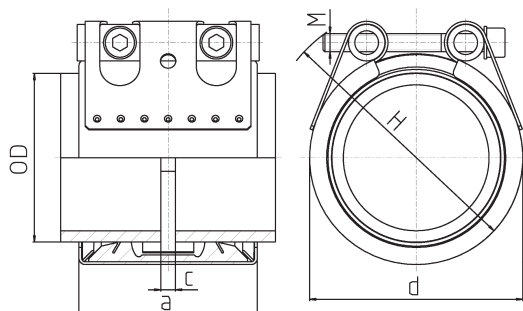
## Enquiries/ordering

When making enquiries or placing orders please indicate:


**Example:**

- |   |       |
|---|-------|
| 1. The type (REP E)                                   | REP E |
| 2. The required material ( <b>W5</b> ), (cf. page 10) | W5    |
| 3. The pipe outside diameter OD, (cf. table)          | 609.6 |
| 4. The sealing sleeve material (EPDM, NBR)            | EPDM  |

For this example, the order text would read: **NORMACONNECT® REP E – W5 – 609.6 – EPDM**

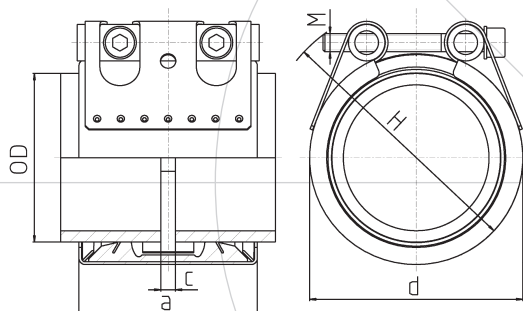


NORMACONNECT® REP E

OD	Clamping range			WP <sup>1)</sup>	C <sub>max</sub>	Clamping range		
(mm)	OD <sub>min</sub>	–	OD <sub>max</sub>	 (bar)	(mm)	a	d clamped approx. (mm)	H approx. (mm)
	(mm)		(mm)			(mm)		
35.0	34.5	–	35.6	60	8	63	55	75
38.0	37.5	–	38.6	60	8	63	60	80
42.4	41.7	–	43.0	50	8	63	65	85
44.5	44.0	–	45.1	50	8	63	65	85
48.3	47.6	–	50.5	50	8	63	70	90
54.0	53.3	–	54.6	50	17	78	75	95
57.0	56.3	–	57.7	50	17	78	80	100
60.3	59.5	–	61.0	40	17	78	85	105
63.0	62.2	–	63.9	40	17	78	85	105
70.0	69.0	–	71.0	40	25	98	90	110
73.0	72.1	–	73.8	40	25	98	95	115
76.1	75.2	–	77.0	35	25	98	100	120
78.0	77.1	–	78.9	35	25	98	100	120
80.0	79.0	–	80.8	35	25	98	100	120
84.0	83.0	–	85.0	35	25	98	105	125
88.9	87.0	–	89.9	35	25	98	110	130
98.0	96.9	–	99.0	35	25	98	120	140
101.6	100.4	–	102.8	35	25	98	125	145
104.0	102.8	–	106.1	35	25	98	125	145
108.0	106.8	–	109.2	35	25	98	130	150
110.0	108.8	–	111.4	35	25	98	130	150
114.3	113.0	–	115.5	35	25	98	135	155
118.0	116.6	–	119.2	35	25	98	140	160
122.0	120.8	–	123.2	32	35	113	145	165
125.0	123.6	–	126.5	32	35	113	145	165
129.0	127.6	–	131.1	32	35	113	155	185
133.0	131.5	–	134.4	32	35	113	160	190
139.7	138.1	–	141.6	32	35	113	165	195
141.3	139.6	–	142.8	32	35	113	170	200
144.0	142.4	–	145.5	32	35	113	170	200
154.0	152.3	–	156.1	32	35	113	180	210
159.0	157.3	–	160.7	32	35	113	185	215
168.3	166.5	–	170.1	32	35	113	195	225
170.0	168.2	–	171.9	32	35	113	195	225

<sup>1)</sup> WP is the max working pressure in industrial applications, based on a safety factor as per NORMA specification.

# NORMACONNECT® REP E



NORMACONNECT® REP E

OD (mm)	Clamping range		WP <sup>1)</sup> (bar)	C <sub>max</sub> (mm)	Clamping range		
	OD <sub>min</sub>	– OD <sub>max</sub>			a	d clamped approx. (mm)	H approx. (mm)
		(mm)			(mm)		
180.0	178.0	– 182.0	30.0	35	139	210	240
193.7	192.0	– 196.0	28.0	35	139	225	255
206.0	202.0	– 208.0	26.5	35	139	240	270
219.1	216.0	– 221.0	23.0	35	139	250	280
225.0	222.0	– 227.0	23.0	35	139	255	285
229.9	228.0	– 232.0	23.0	35	139	260	290
244.5	242.0	– 247.0	22.0	35	139	275	305
254.0	250.0	– 256.0	21.0	35	139	285	315
267.0	264.0	– 269.0	20.0	35	139	300	330
273.0	270.0	– 275.0	20.0	35	139	305	335
306.0	302.0	– 308.0	17.5	35	139	340	370
323.9	320.0	– 327.0	17.5	35	139	355	385
326.0	322.0	– 329.0	16.5	35	139	360	390
355.6	352.0	– 359.0	15.0	35	139	390	420
406.4	402.0	– 410.0	14.0	35	139	440	470
429.0	426.0	– 431.0	13.0	35	139	460	490
442.0	439.0	– 444.0	13.0	35	139	475	505
457.2	454.0	– 459.0	12.0	35	139	490	520
508.0	505.0	– 510.0	11.0	35	139	540	570
531.0	528.0	– 534.0	10.5	35	139	565	595
558.8	556.0	– 562.0	10.0	35	139	590	620
609.6	606.0	– 613.0	9.0	35	139	640	670
634.0	631.0	– 637.0	8.0	35	139	665	695
711.2	707.0	– 715.0	7.0	35	139	745	775
762.0	758.0	– 766.0	7.0	35	139	795	825
812.8	808.0	– 817.0	6.5	35	139	845	875
914.4	909.0	– 919.0	5.5	35	139	945	975
1016.0	1013.0	– 1019.0	5.0	35	139	1050	1080
1117.5	1114.0	– 1120.0	4.5	35	139	1150	1180
1219.2	1216.0	– 1222.0	4.0	35	139	1250	1280

<sup>1)</sup> WP is the max working pressure in industrial applications, based on a safety factor as per NORMA specification.

Sizes > 1219.2 mm on request.

## Rep Series

### NORMACONNECT® Rep E (35.0 – 170.0 mm)

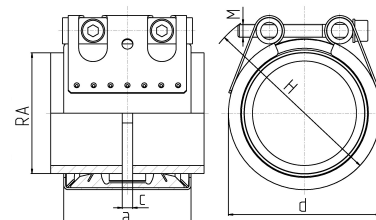
**Axial non-restraint repair coupling for use with virtually all pipe materials**


Available in **W5** material

**Seal:** EPDM or NBR

**Operating Temperatures:** EPDM -30°C to +125°C  
and NBR -20°C to +80°C

**Test Pressure:** 1.5 x working pressure (WP)



OD	Clamp. Range		WP <sup>1)</sup>	C <sub>max</sub>	Dimensions			Weight	Hex socket locking bolts	
(mm)	OD <sub>min</sub>	OD <sub>max</sub>		(mm)	a	d	H	approx. (kg/pc.)	Thread	Tightening torque (Nm)
	(mm)	(mm)	(bar)		(mm)	app. (mm)	app. (mm)			
35,0	34,5	- 35,6	60	8	63	55	75	0,41	M 8 SW 6	5
38,0	37,5	- 38,6	60	8	63	60	80	0,41	M 8 SW 6	5
42,4	41,7	- 43,0	50	8	63	65	85	0,42	M 8 SW 6	5
44,5	44,0	- 45,1	50	8	63	65	85	0,43	M 8 SW 6	5
48,3	47,6	- 50,5	50	8	63	70	90	0,44	M 8 SW 6	5
54,0	53,3	- 54,6	50	17	78	75	95	0,58	M 8 SW 6	10
57,0	56,3	- 57,7	50	17	78	80	100	0,58	M 8 SW 6	10
60,3	59,5	- 61,0	40	17	78	85	105	0,59	M 8 SW 6	10
63,0	62,2	- 63,9	40	17	78	85	105	0,59	M 8 SW 6	10
70,0	69,0	- 71,0	40	25	98	90	110	1,11	M 8 SW 6	10
73,0	72,1	- 73,8	40	25	98	95	115	1,13	M 8 SW 6	10
76,1	75,2	- 77,0	35	25	98	100	120	1,13	M 8 SW 6	10
78,0	77,1	- 78,9	35	25	98	100	120	1,14	M 8 SW 6	15
80,0	79,0	- 80,8	35	25	98	100	120	1,16	M 8 SW 6	15
84,0	83,0	- 85,0	35	25	98	105	125	1,18	M 8 SW 6	15
88,9	87,0	- 89,9	35	25	98	110	130	1,20	M 8 SW 6	15
101,6	100,4	- 102,8	35	25	98	125	145	1,32	M 8 SW 6	15
104,0	102,8	- 106,1	35	25	98	125	145	1,33	M 8 SW 6	15
108,0	106,8	- 109,2	35	25	98	130	150	1,36	M 8 SW 6	15
110,0	108,8	- 111,4	35	25	98	130	150	1,40	M 8 SW 6	15
114,3	113,0	- 115,5	35	25	98	135	155	1,40	M 8 SW 6	20
122,0	120,8	- 123,2	32	35	113	145	165	1,99	M 10 SW 8	30
129,0	127,6	- 131,1	32	35	113	155	185	2,00	M 10 SW 8	30
133,0	131,5	- 134,4	32	35	113	160	190	2,03	M 10 SW 8	30
139,7	138,1	- 141,6	32	35	113	165	195	2,08	M 10 SW 8	35
141,3	139,6	- 142,8	32	35	113	170	200	2,09	M 10 SW 8	35
154,0	152,3	- 156,1	32	35	113	180	210	2,19	M 10 SW 8	50
159,0	157,3	- 160,7	32	35	113	185	215	2,26	M 10 SW 8	50
168,3	166,5	- 170,1	32	35	113	195	225	2,31	M 10 SW 8	50

#### References

<sup>1)</sup> **WP** is the max. working pressure in industrial applications, with a safety factor as per NORMA specification.

Subject to technical changes

# NORMACONNECT® Rep E (180.0 – 1219.2 mm)

Axial non-restraint repair coupling for use with virtually all pipe materials

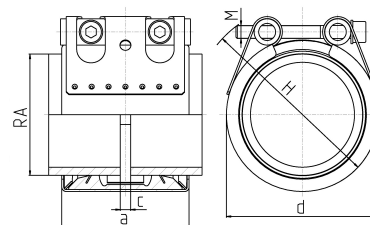
Available in **W2**, **W4** or **W5** material


Seal: EPDM or NBR

Operating Temperatures: EPDM and NBR -20°C to +80°C

Test Pressure: 1.5 x working pressure (WP)

Sizes > 1219,2 on request



OD	Clamp. Range	WP <sup>1)</sup>	C <sub>max</sub>	Dimensions			Weight	Hex socket locking bolts	
(mm)	OD <sub>min</sub> - OD <sub>max</sub> (mm)	 (bar)	(mm)	a (mm)	d clamped app. (mm)	H app. (mm)	approx. (kg/pc.)	Thread	Tightening torque (Nm)
180,0	178,0 - 182,0	30,0	35	139	210	240	4,0	M 12 SW 10	25,0
193,7	192,0 - 196,0	28,0	35	139	225	255	4,1	M 12 SW 10	25,0
206,0	202,0 - 208,0	26,5	35	139	240	270	4,3	M 12 SW 10	25,0
219,1	216,0 - 221,0	23,0	35	139	250	280	4,4	M 12 SW 10	25,0
225,0	222,0 - 227,0	23,0	35	139	255	285	4,5	M 12 SW 10	25,0
229,9	228,0 - 232,0	23,0	35	139	260	290	4,5	M 12 SW 10	25,0
244,5	242,0 - 247,0	22,0	35	139	275	305	4,7	M 12 SW 10	25,0
254,0	250,0 - 256,0	21,0	35	139	285	315	4,8	M 12 SW 10	25,0
267,0	264,0 - 269,0	20,0	35	139	300	330	5,0	M 12 SW 10	25,0
273,0	270,0 - 275,0	20,0	35	139	305	335	5,1	M 12 SW 10	25,0
306,0	302,0 - 308,0	17,5	35	139	340	370	5,5	M 12 SW 10	25,0
323,9	320,0 - 327,0	17,5	35	139	355	385	5,7	M 12 SW 10	25,0
326,0	322,0 - 329,0	16,5	35	139	360	390	5,7	M 12 SW 10	25,0
355,6	352,0 - 359,0	15,0	35	139	390	420	6,0	M 12 SW 10	25,0
406,4	402,0 - 410,0	14,0	35	139	440	470	6,6	M 12 SW 10	25,0
429,0	426,0 - 431,0	13,0	35	139	460	490	6,9	M 12 SW 10	40,0
442,0	439,0 - 444,0	13,0	35	139	475	505	7,1	M 12 SW 10	40,0
457,2	454,0 - 459,0	12,0	35	139	490	520	7,3	M 12 SW 10	40,0
508,0	505,0 - 510,0	11,0	35	139	540	570	7,9	M 12 SW 10	40,0
531,0	528,0 - 534,0	10,5	35	139	565	595	8,1	M 12 SW 10	40,0
558,8	556,0 - 562,0	10,0	35	139	590	620	8,5	M 12 SW 10	40,0
609,6	606,0 - 613,0	9,0	35	139	640	670	9,1	M 12 SW 10	40,0
634,0	631,0 - 637,0	8,0	35	139	665	695	9,4	M 12 SW 10	40,0
711,2	707,0 - 715,0	7,0	35	139	745	775	10,3	M 12 SW 10	40,0
762,0	758,0 - 766,0	7,0	35	139	795	825	10,9	M 12 SW 10	40,0
812,8	808,0 - 817,0	6,5	35	139	845	875	11,5	M 12 SW 10	40,0
914,4	909,0 - 919,0	5,5	35	139	945	975	12,7	M 12 SW 10	45,0
1016,0	1013,0 - 1019,0	5,0	35	139	1050	1080	13,9	M 12 SW 10	45,0
1117,5	1114,0 - 1120,0	4,5	35	139	1150	1180	15,1	M 12 SW 10	50,0
1219,2	1216,0 - 1222,0	4,0	35	139	1250	1280	16,3	M 12 SW 10	50,0

## References

Subject to technical changes

<sup>1)</sup> WP is the max. working pressure in industrial applications, with a safety factor as per NORMA specification.

pipes to be joined	[mm]	Grip	Grip E	CombiGrip E	CombiGrip	PlastGrip E	PlastGrip
metal + metal	26.9 to 168.3	70 to 32 bar	70 to 32 bar	-		-	-
	180.0 to 419.0	-	20 to 2 bar	-		-	-
	180.0 to 711.2	32 to 2.5 bar	-	-		-	-
plastic + plastic	40.0 to 168.3	-	-	-		16 bar	-
	200.0 to 406.4	-	-	-	-	-	16 to 6
metal + plastic	38/40 to 160/168.3	16 bar	16 bar	16 bar	-	-	-
	200.0/204.0 to 406.0 /406.4	-	-		16 to 6	-	-

Material of seal	EPDM	NBR
Temperature resistance	-30° to +125° -22°F to 257°F OD 26.9 - 168.3mm  -20°C to + 80°C -4°F to 176°F OD > 180mm	-20°C to + 80°C -4°F to 176°F
Media resistance	Potable water alcohols Compressed Air	Water oils / fuels (combustible) gases