

# Type DA 2264 and 1500-P

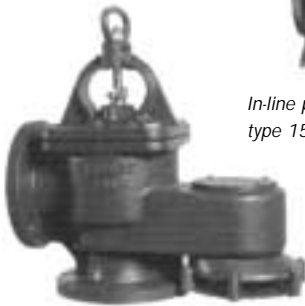
## In-line Valve

**In-line automatic weightloaded pressure/vacuum relief valves with flame screen protected vacuum units drawing ambient air.**

*In-line pressure/vacuum valve type DA*



*In-line pressure/vacuum valve type 1500-P*



Type DA and 1500-P are combined pressure/vacuum valves, designed to relieve pressure and vacuum during loading, discharge, voyage (thermal variation) and ballasting in common venting systems. The valves can operate in automatic or manual mode. During voyage, the valves operate automatically and relieve pressure or vacuum caused by thermal variations and sloshing. Type DA and 1500-P feature remarkable low pressure drop due to a low number of flow direction changes, especially with regard to the vacuum unit as pressure drop across the end-of-line flame screen and piping downstream is eliminated. Pressure outlet to be through an approved device to prevent the passage of flame according to IMO MSC/Circ.677. The vacuum valve is separately approved to 677\*. Attention should be paid to the operational risks involved with the use of common venting systems because breather valves are generally not sufficient to handle ballasting or cargo transfer.

### Features of type DA 2264 and 1500-P:

- Automatically operated
- Hand wheel for forced open position of the pressure unit
- Available in materials compatible with any cargo
- Simple rigid design and construction
- Easy maintenance
- Limited application: Installation on new tankers requires that the outlet to atmosphere is through an approved device suitable for the cargo vapor group. Locking arrangement to protect against entry of gases during tank inspection is advisable.

*Options: See specification*



*In-line pressure/vacuum valve type GB*

Type GB basically has the same specifications as type DA and 1500-P. However, due to the natural ability to backwards drainage it is ideal for branch line installation on small capacity vessels, such as inland tankers.

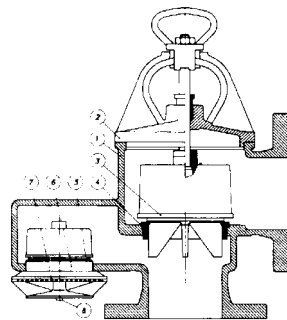
*\*Installation should eliminate the vacuum valve from exposure to waves to avoid water from entering. Water excluding device is optional.*

# In-line automatic weightloaded pressure/vacuum relief valve with external vacuum units

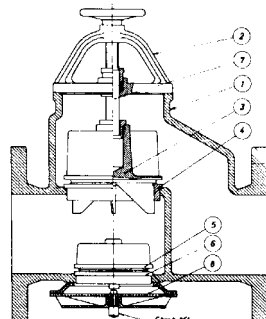
<b>Specifications</b>	
<b>Type:</b>	DA 2264 1500-P
<b>Dimensions:</b>	See drawing 2264 See drawing 1500-P
<b>Settings:</b>	To fit application
<b>Accuracy</b>	± 2%
<b>Ice layer:</b>	Not applicable
<b>Capacities:</b>	Up to 15,000 Nm <sup>3</sup> /hr See certified curves
<b>Pressure drop in excess of set-pressure:</b>	Yes
<b>Valve type:</b>	Modulating
<b>Materials:</b>	Cast iron, nodular iron, bronze, stainless steel

<b>Nominal sizes</b>	
ND50 - 400	
<b>Options</b>	
Proximity switches, desiccator, water excluding device on vacuum inlet, check-lifts, pressure unit only, soft PTFE seats, drainage	

<b>Certification</b>	
Approved for all new tankers depending on application and installation in combination with certified device to prevent the passage of flame from the pressure unit according to IMO MSC/Circ. 677. All Pres-Vac products are type approved by the leading classification societies and by relevant flag state administrations. Upon request certified copies of certificates will be furnished.	



Type DA 2264



Type 1500-P

Available with any connection and in any material requested. Please ask for detail drawing and performance data sheets for any specific model and type.

Item	Description
1	Valve body
2	Top cover
3	Pressure disc
4	Pressure seat
5	Vacuum disc
6	Vacuum seat
7	Spindle
8	Protecting screen

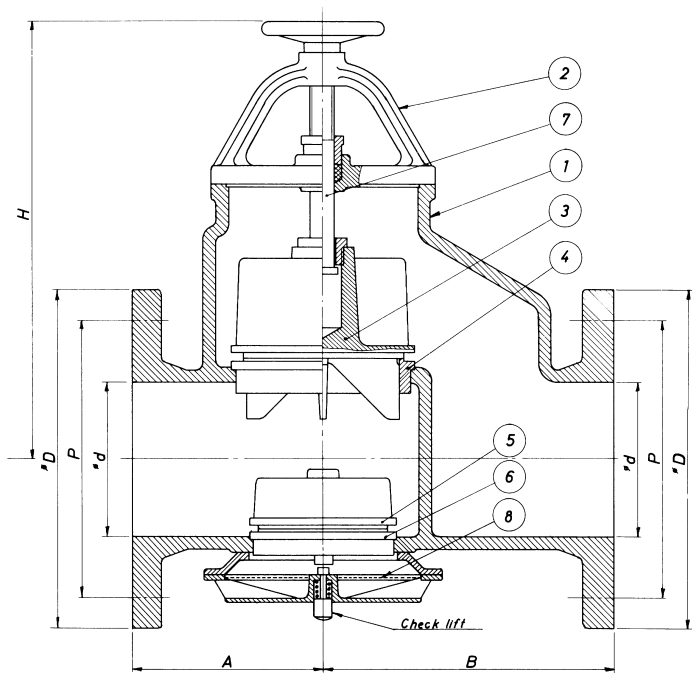
Item	Description
1	Valve body
2	Top cover
3	Pressure disc
4	Pressure seat
5	Vacuum disc
6	Vacuum seat
7	Protecting screen
8	Check lift, optional

drwg. no.: 2264	
date:	drwg.:
model:	scale:
drw. rev.: 2	material:

# Type DA

Automatic weightloaded pressure/vacuum valve

10	250	220	415	585	395	350	12x22
8	200	195	355	575	340	295	8x22
6	150	160	280	500	285	240	8x22
4	100	140	225	445	220	180	8x18
3	80	115	175	425	200	180	8x18
2½	65	105	160	410	185	145	4x18
°d inch	°d mm	A mm	B mm	H mm	D mm	P-mm drilling	Holes drilling



**Opening standard:**

- Pressure: 1400 mm W.G.
- Vacuum: 350 mm W.G.

Approved by:  
 Lloyds Register of Shipping  
 Det Norske Veritas  
 Bureau Veritas  
 American bureau of Shipping  
 USSR Register of Shipping  
 USCG Cert. no. 162.017/122/1

**Parts list**

Item	Description	Spec. 1	Spec. 2
1	Valve body	Cast iron	Cast iron
2	Top cover	Cast iron	Cast iron
3	Pressure disc	Bronze	Stainless steel
4	Pressure seat	Bronze	Stainless steel
5	Vacuum disc	Bronze	Stainless steel
6	Vacuum seat	Bronze	Stainless steel
7	Spindle	Brass	Stainless steel
8	Protecting screen	Stainless steel	Stainless steel

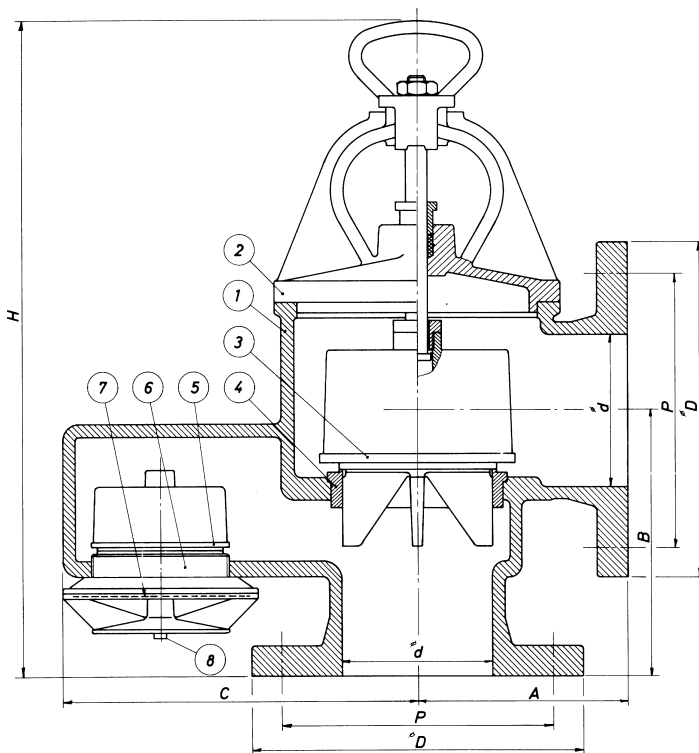
This drawing is for guidance only. Other sizes, materials, flange standards, settings, and versions are available. Request a specific quotation or approval drawing before implementing data.

drwg. no.: 1500-P	
date:	drwg.:
model:	scale:
drw. rev.:	material:

# Type P

Automatic weightloaded pressure/vacuum valve

8	200	210	290	410	645	340	295	8x22
6	150	170	312	285	645	285	240	8x18
5	125	160	200	305	485	250	210	8x18
4	100	140	175	225	440	220	180	8x18
3	80	140	160	245	420	200	160	4x18
2½	70	105	135	190	350	185	145	4x18
°d inch	°d mm	°A mm	B mm	C mm	H mm	°D mm	P-mm drilling	Holes drilling



**Opening standard:**

- Pressure: 1400 mm W.G.
- Vacuum: 350 mm W.G.

Approved by:  
 Lloyds Register of Shipping  
 Det Norske Veritas  
 Bureau Veritas  
 American bureau of Shipping  
 U.S.C.G. Cert. no. 162.017/130/0

**Parts list**

Item	Description	Spec. 1	Spec. 2
1	Valve body	Cast iron	Cast iron
2	Top cover	Cast iron	Cast iron
3	Pressure disc	Bronze	Stainless steel
4	Pressure seat	Bronze	Stainless steel
5	Vacuum disc	Bronze	Stainless steel
6	Vacuum seat	Bronze	Stainless steel
7	Protecting screen	Stainless steel	Stainless steel
8	Check lift, optional	Stainless steel	Stainless steel

This drawing is for guidance only. Other sizes, materials, flange standards, settings, and versions are available. Request a specific quotation or approval drawing before implementing data.